
WHERE BEAUTY MEETS SCIENCE & TECHNOLOGY

WORK INSTRUCTIONS

Date: 03/09/2026

Model: Mystic Unity

Subject: Compressor Filters Maintenance

The following steps describe how to remove, clean, and reinstall the compressor filters on your Mystic Unity Booth. Failure to properly maintain both compressor air filters can result in low air pressure, reduced compressor efficiency, low solution flow, and other issues that negatively impact the client's tanning experience.

*Note: To prevent equipment damage, **do not reinstall the filters until they are fully dry.***

Parts:

N/A

Tool Required:

N/A

Replacement Steps:

- 1) Locate the lower drawer access cover panel.
- 2) Remove the cover panel.
 - a) The panel is held in place with magnets. Pull gently from the top edge to remove it.
- 3) Locate the compressor filters.
 - a) They are at the bottom of the opening, below the lower drawer assembly.
- 4) Remove the filters from the retaining clip (C-clip).
 - a) Pull the filter assembly out of the clip holding it in place.
- 5) Remove the outer foam filter.
- 6) Remove the inner filter.
 - a) The inner filter is attached to an air hose with a push-lock fitting.
 - b) To disconnect it:

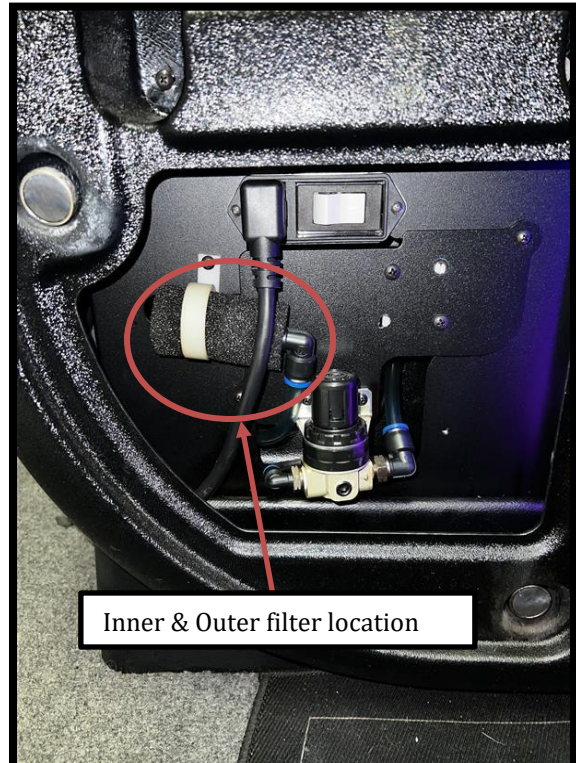
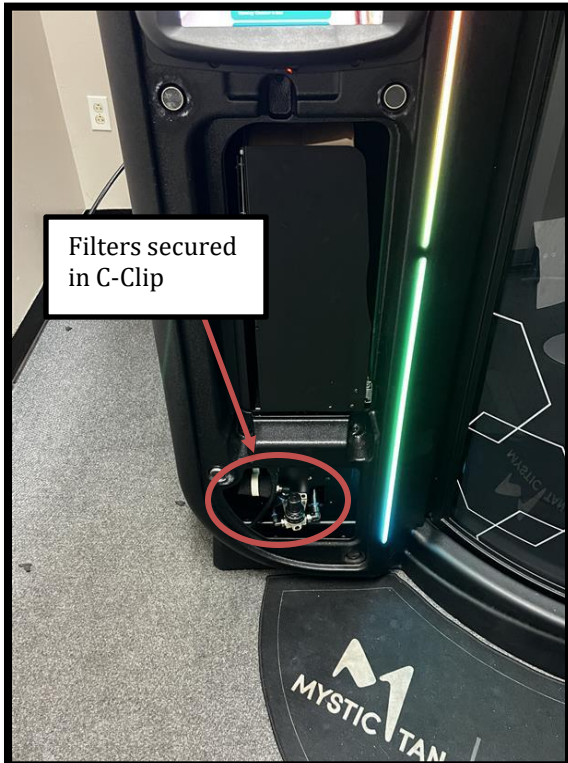
WHERE BEAUTY MEETS SCIENCE & TECHNOLOGY

- i) Push in the blue ring on the fitting.
 - ii) While holding the ring in, gently pull the filter away from the air hose.
 - c) If it feels stuck, make sure the blue ring is pushed in fully before pulling.
- 7) Rinse both filters with warm water.
- a) Rinse the foam filter thoroughly and squeeze/ring it out while rinsing to remove any built-up tanning solution.
 - b) Rinse the inner filter by running water through it until the slats/openings are clear of any residue.
- 8) Allow both filters to dry completely before reinstalling.
- a) Do not reinstall the filters while wet. Wet filters can cause damage to the compressor and other internal components.
 - b) If you have a spare filter set, install the spare set while the cleaned filters dry.
- 9) Reinstall the filters once fully dry.
- a) Reconnect the inner filter to the air hose and confirm it is firmly seated.
 - b) Slide the outer foam filter over the inner filter.
 - c) Place the filters back into the C-clip to secure them.
- 10) Test and reassemble.
- 11) It is recommended to run a session cup purge to check for air leaks.
- 12) Reinstall the access cover panel and return the booth to service.

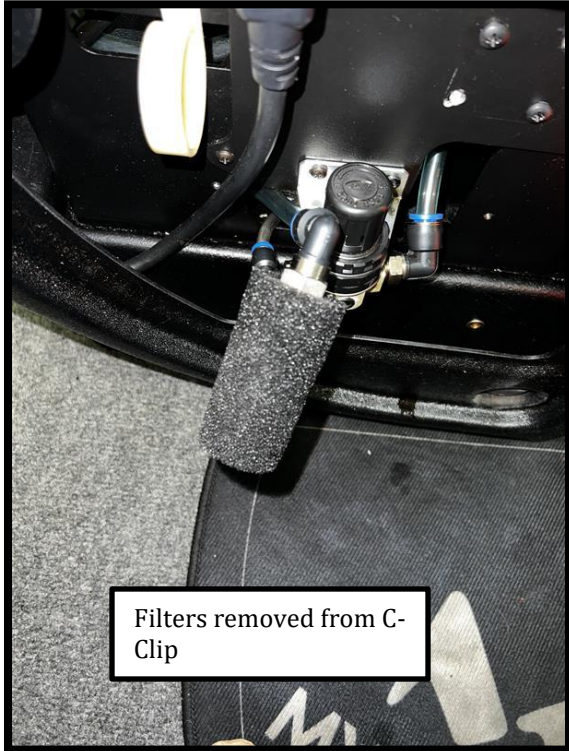
Photos on following pages

WHERE BEAUTY MEETS SCIENCE & TECHNOLOGY

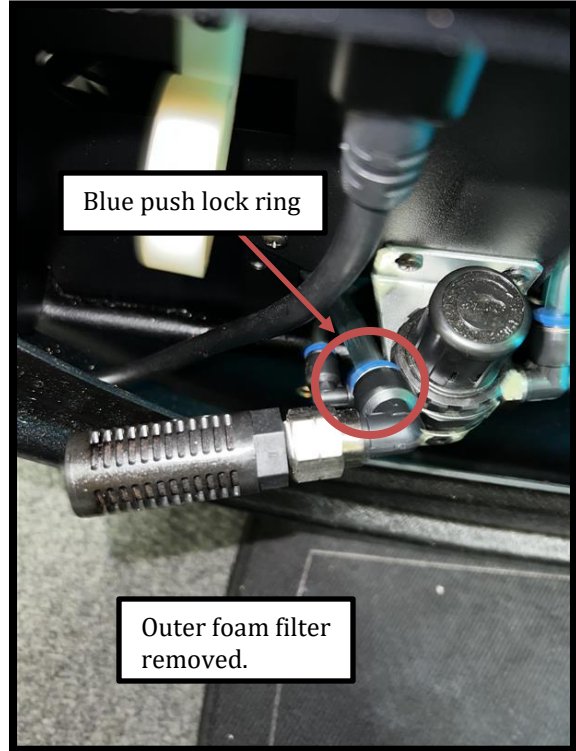
Photos:



WHERE BEAUTY MEETS SCIENCE & TECHNOLOGY

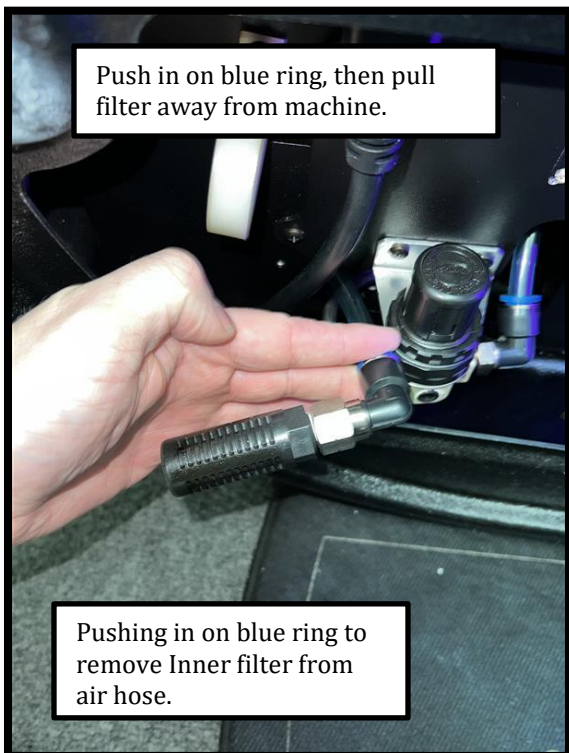


Filters removed from C-Clip



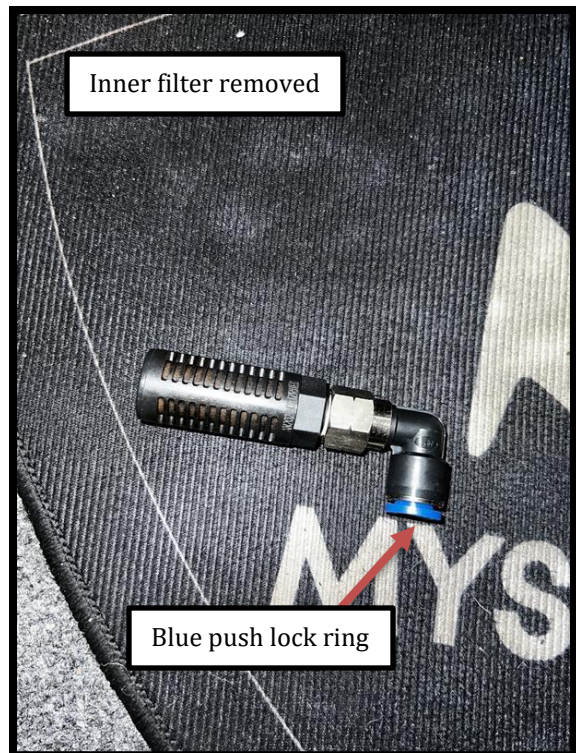
Blue push lock ring

Outer foam filter removed.



Push in on blue ring, then pull filter away from machine.

Pushing in on blue ring to remove Inner filter from air hose.



Inner filter removed

Blue push lock ring

WHERE BEAUTY MEETS SCIENCE & TECHNOLOGY

